

Assigning a static IP address to a Windows 10 Machine

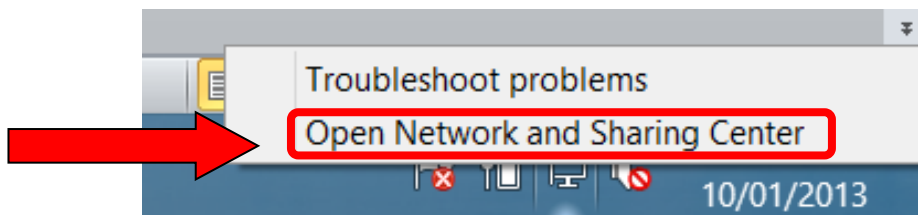
STEP 1:

In the Notification Area, right click the Network icon (represented by a display icon or 5 bars)



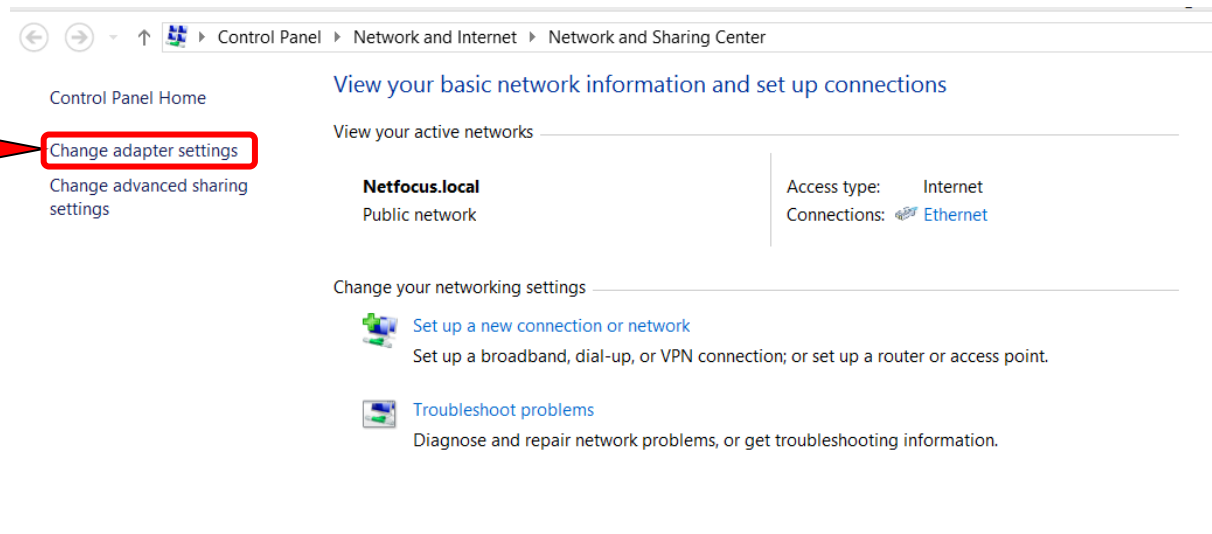
STEP 2:

Left click 'Open Network and Sharing Centre'



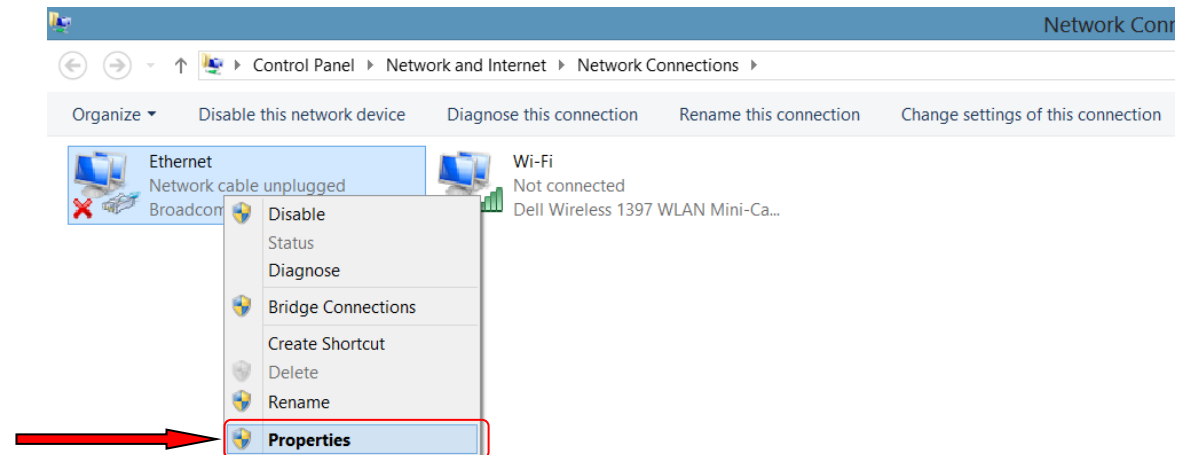
STEP 3:

Left click the 'Change adapter settings' link.



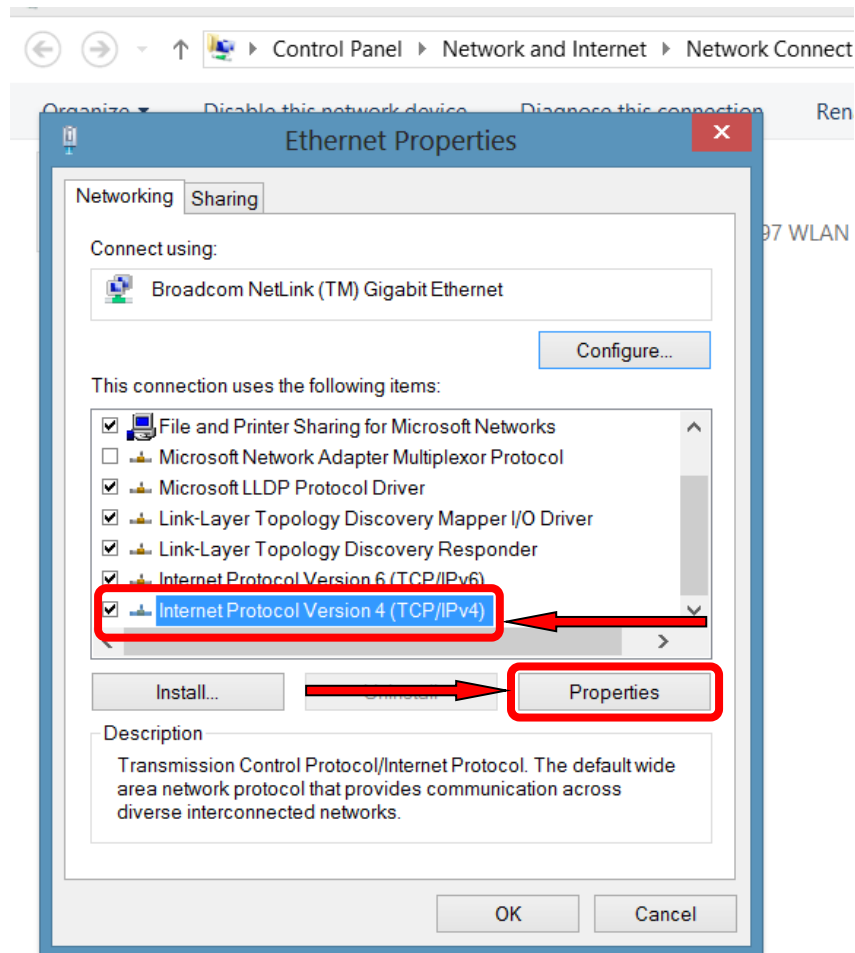
STEP 4:

Right Click on Local area Connection/Ethernet and select Properties.



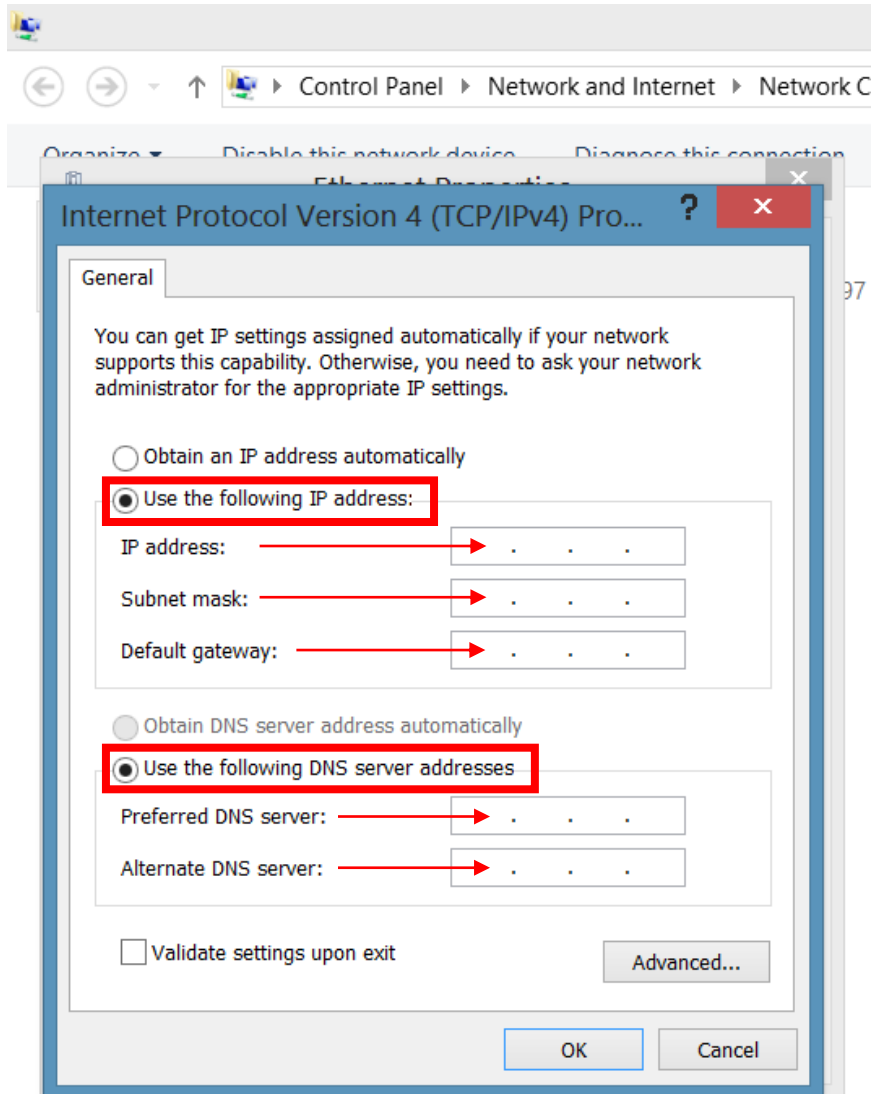
STEP 5:

Highlight TCP/IP4 and click properties.



STEP: 6

Click on Highlighted buttons and enter the IP details that are given to you by Cuirt na Coiribe.



That's It.
