

## Instruction Sheet for Windows 7

### Assigning a static IP address to a Windows 7 Machine

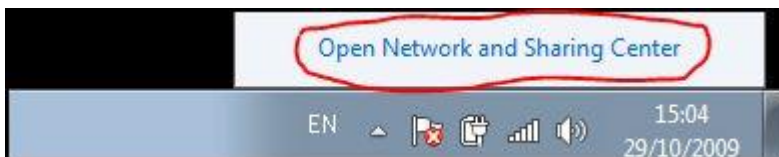
Step 1:

In the Notification Area, left click the Network icon (represented by a display icon or 5 bars)



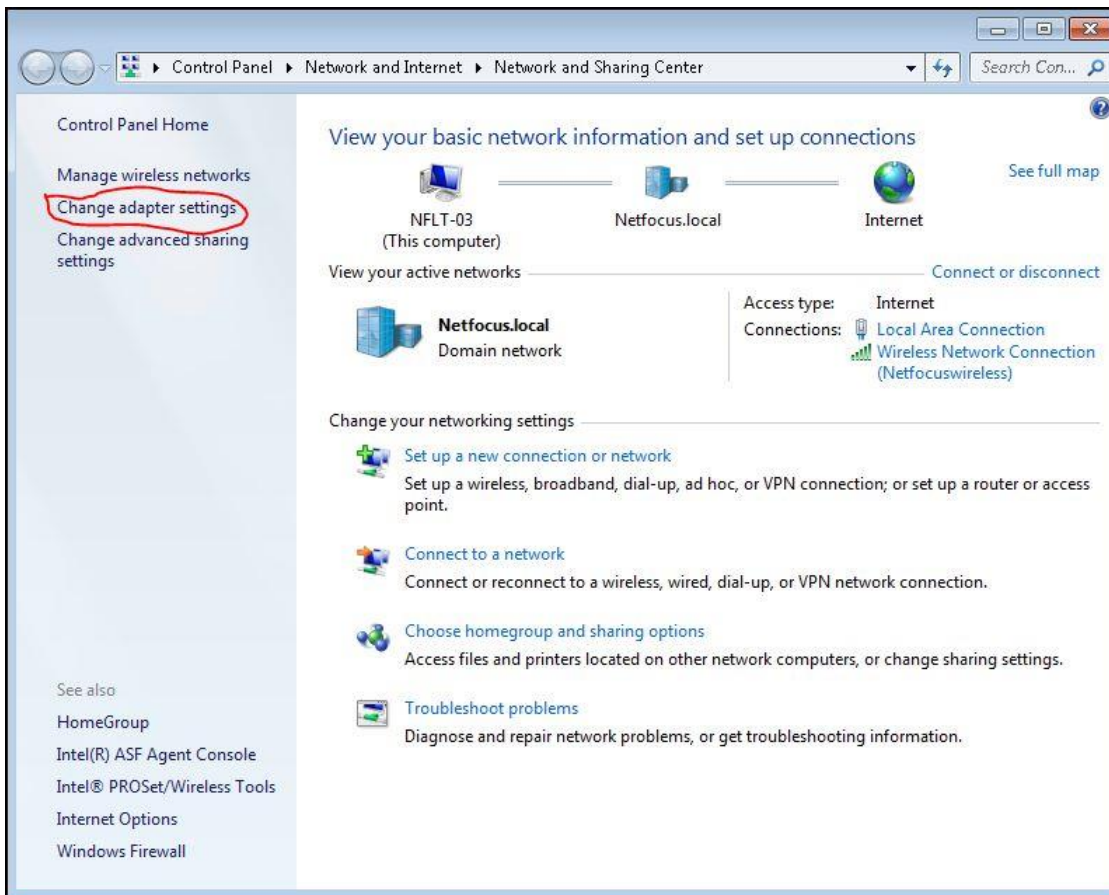
Step 2:

Left click 'Open Network and Sharing Center'



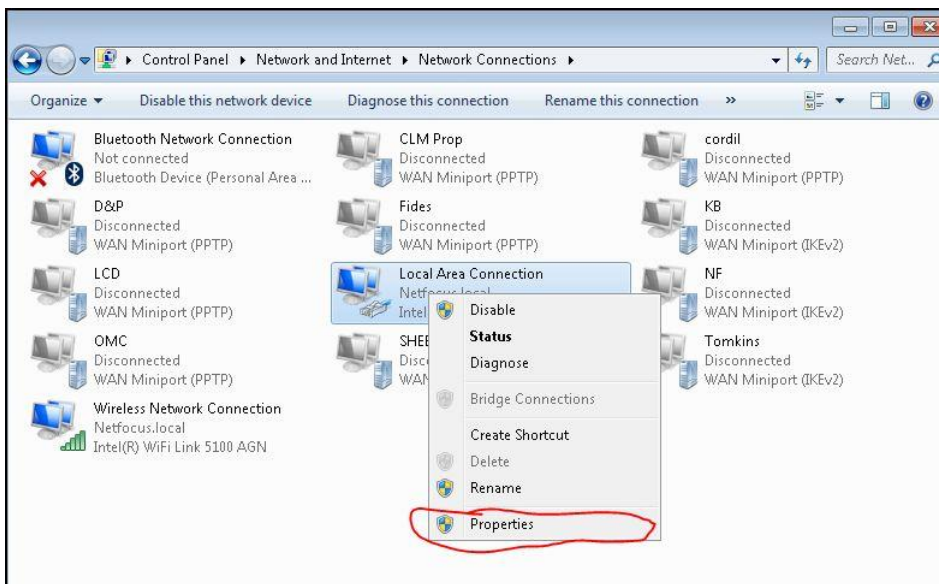
Step 3:

Left click the 'Change adapter settings' link.

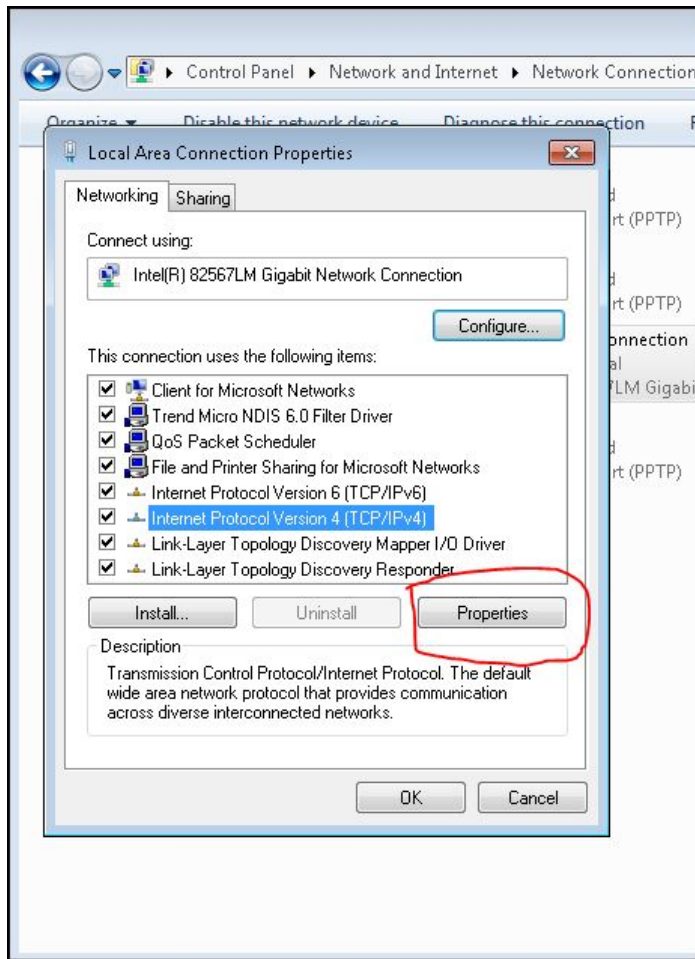


Step 4:

Right Click on Local area Connection and select Properties.

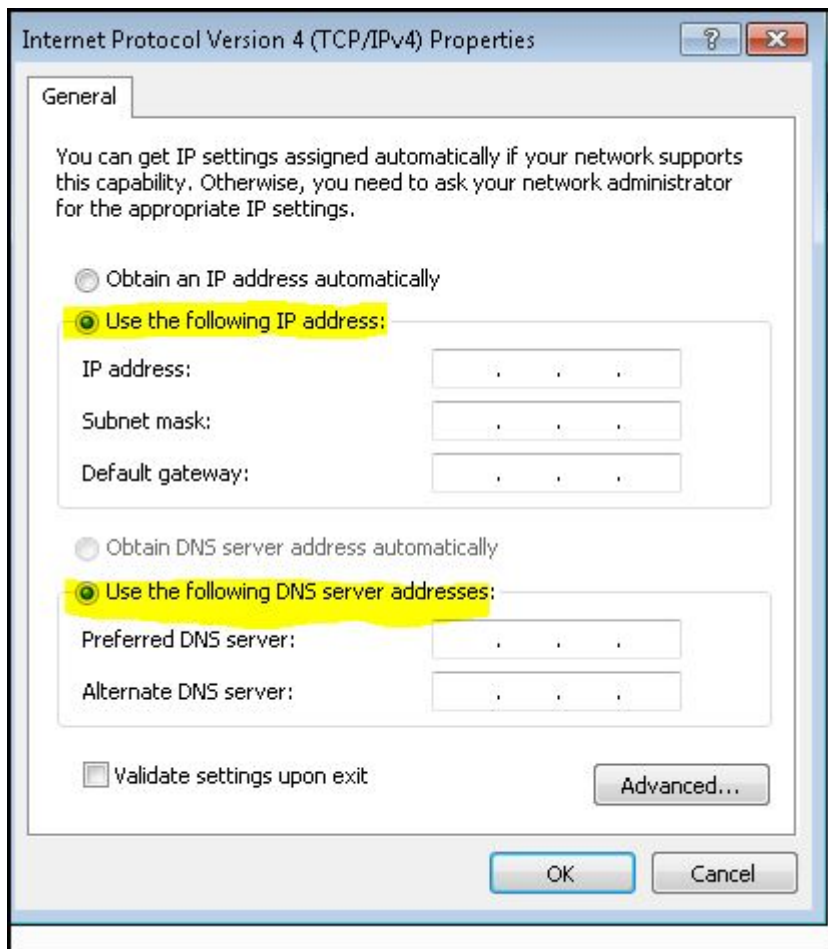


STEP: 5 Highlight TCP/IPv4 and click properties.



Step: 6

Click on Highlighted buttons and enter the IP details that are given to you by Cuirt na Coiribe.



**That's It.**