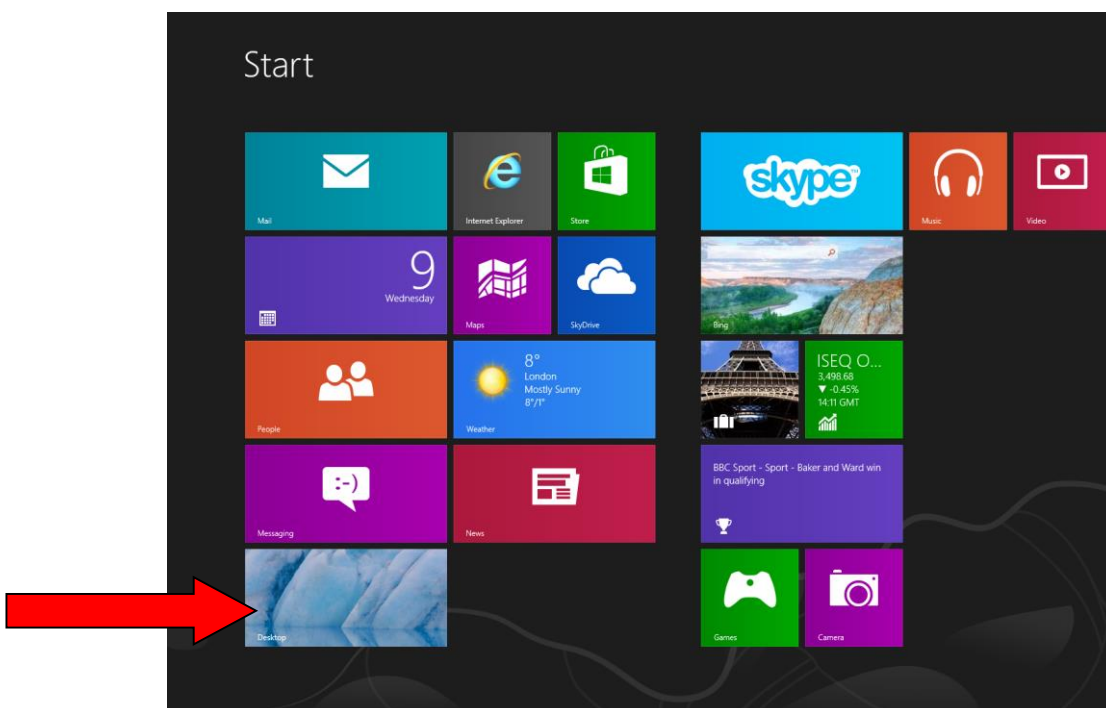


# Assigning a static IP address to a Windows 8 Machine

---

## **STEP 1:**

From the Start menu go to your "Desktop" by clicking the panel or simply typing "Desktop and press enter:



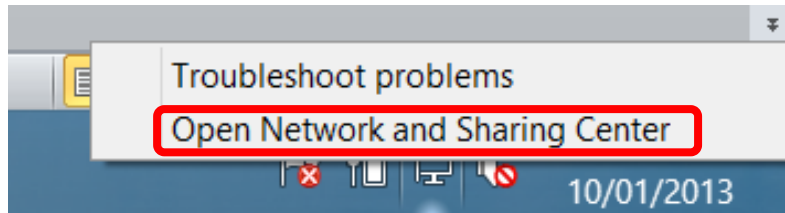
## **STEP 2:**

In the Notification Area, right click the Network icon (represented by a display icon or 5 bars)



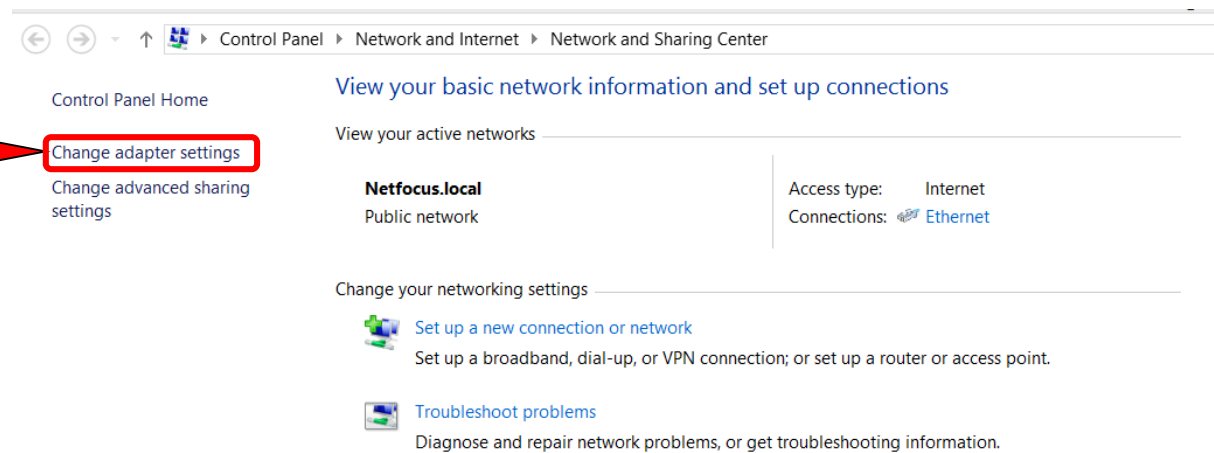
### **STEP 3:**

Left click 'Open Network and Sharing Centre'



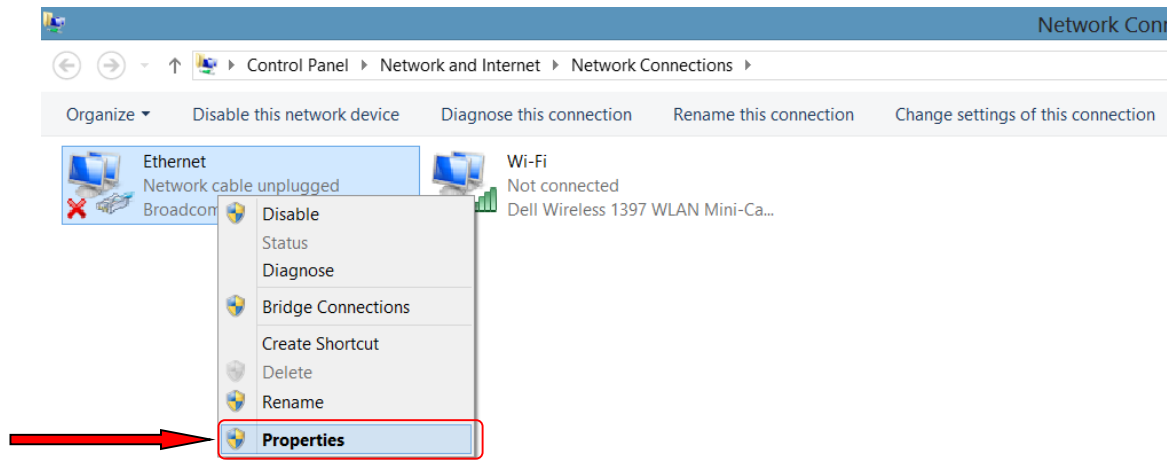
### **STEP 4:**

Left click the 'Change adapter settings' link.



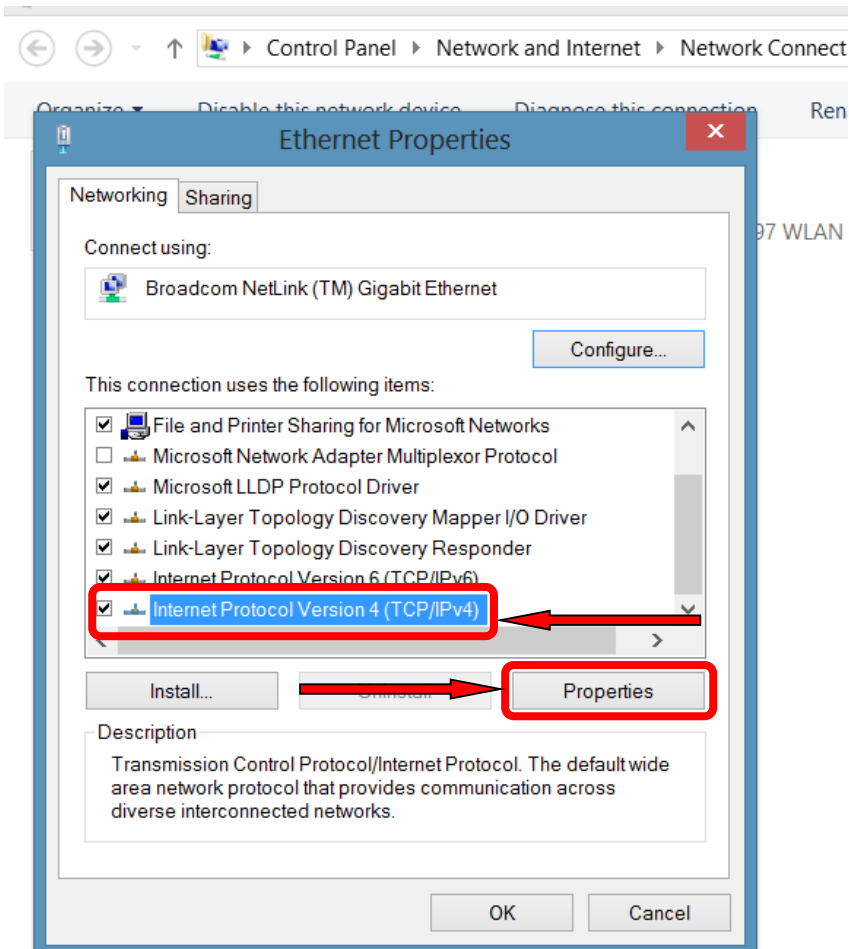
## STEP 5:

Right Click on Local area Connection/Ethernet and select Properties.



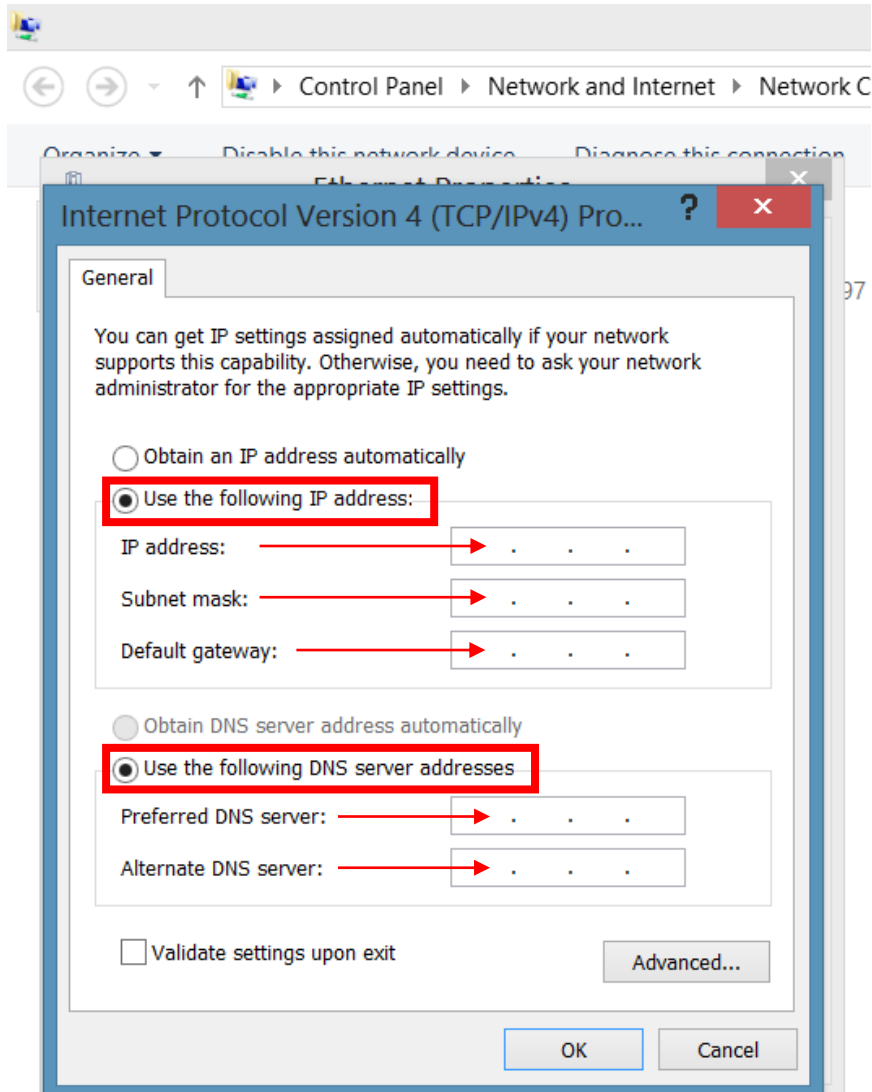
## STEP 6:

Highlight TCP/IP4 and click properties.



## **STEP: 7**

Click on Highlighted buttons and enter the IP details that are given to you by Cuirt na Coiribe.



That's It.

---