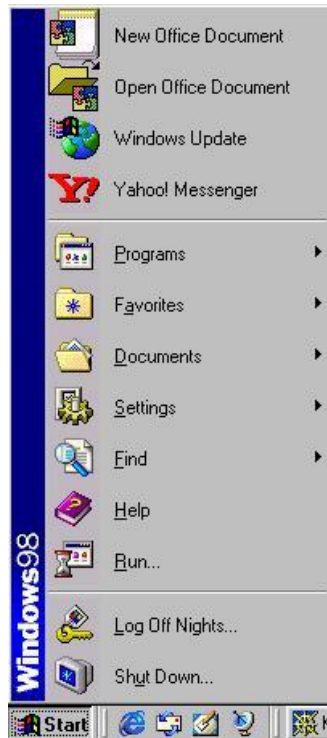


Guide to setting up a static IP on Windows 98

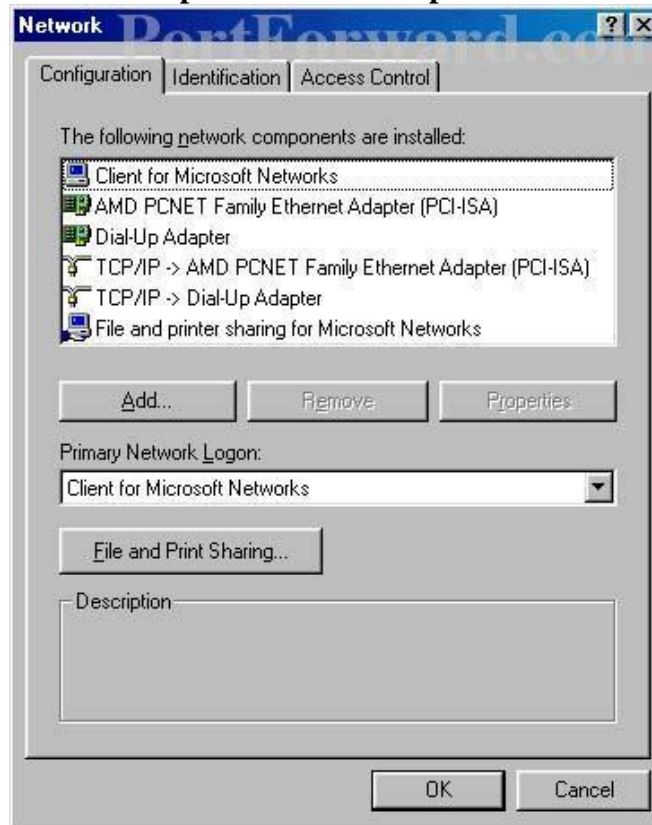
Step 1: Click on the **Start** menu then go to **Settings** and click **Control Panel**



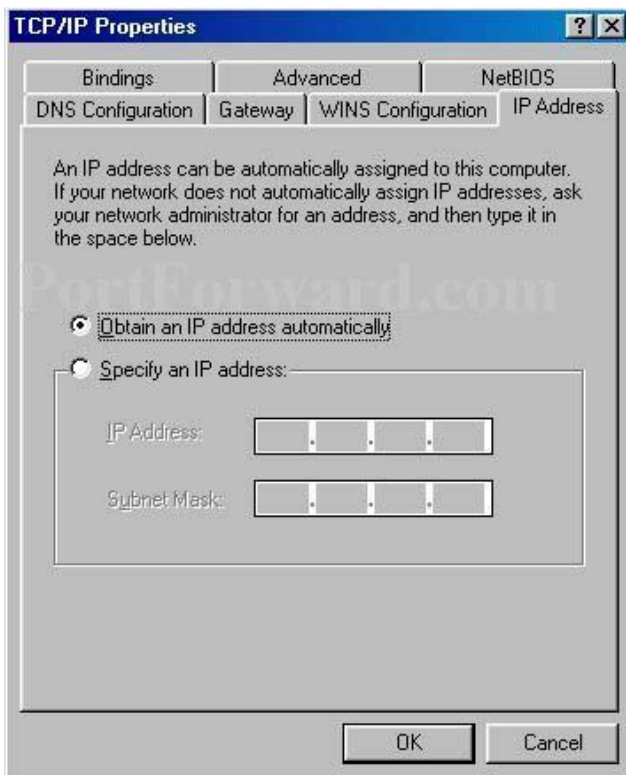
Step 2: Double click **Network** icon



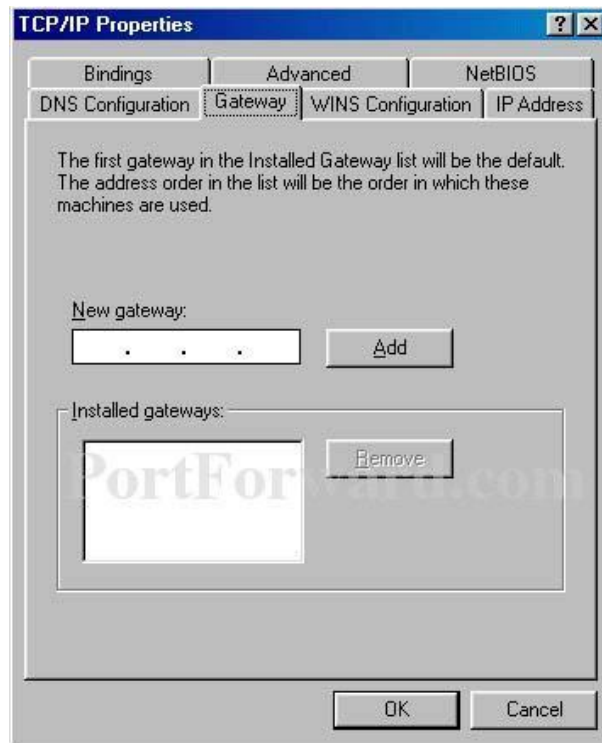
Step 3: Click on the **TCP/IP Ethernet Adaptor** then click **Properties**



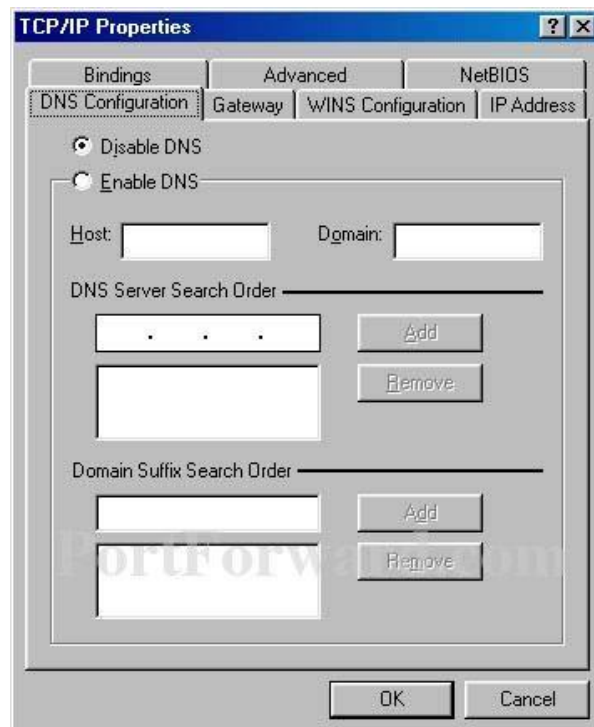
Step 4: You should now see the window below. Click on the **IP Address** tab at the top of the screen. Click on the round button next to where it says '**Specify an IP address**'. Enter the **IP address** you have been provided with (it should look something like 10.10.1.150). Below that enter the **Subnet Mask** that you were given.



Step 5: Now click the 'Gateway' tab at the top of the window. Enter the **Gateway** number that you were given into the **New Gateway** box and then hit **Add**.



Step 6: Now click the **DNS Configuration** tab at the top of the window. Tick the round button next to where it says 'Enable DNS'. In the **DNS Server Search Order** box enter the first **DNS** number you were provided with, then click **Add**. Now go ahead and enter the second **DNS** number you were given and click **Add**.



Step 7: Click **OK** to save and close this window. Close all open windows by pressing **OK**. Try your new connection by opening your web browser. If you cannot connect to the internet **go through the above instructions again before seeking assistance**.