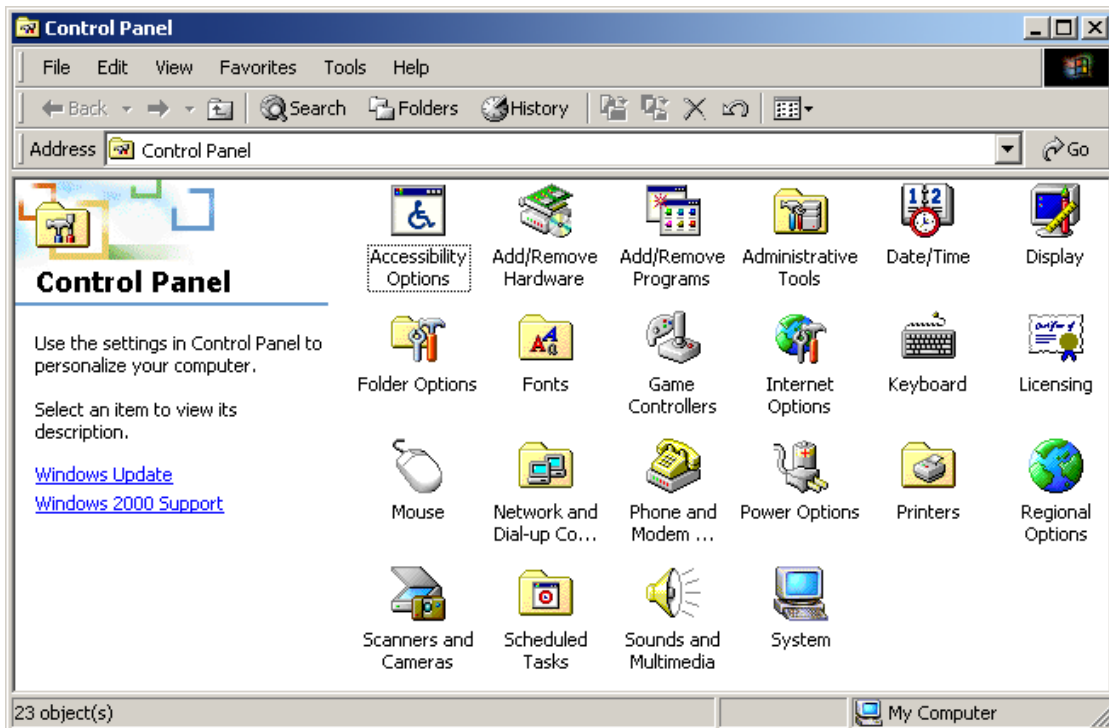


# Guide to setting up a static IP on Windows 2000

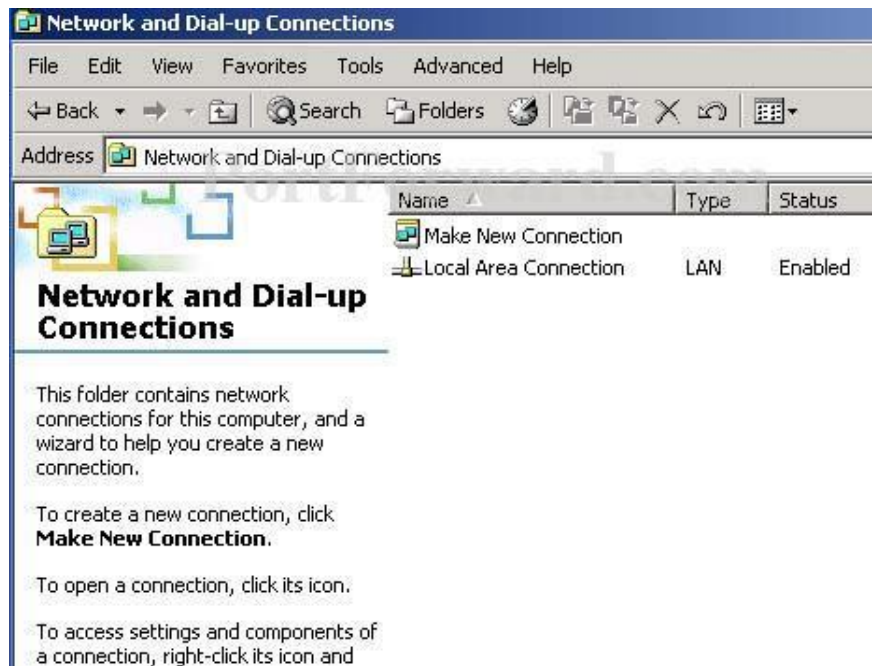
Step 1: Click open **Start** menu then go to **Settings** and click **Control Panel**



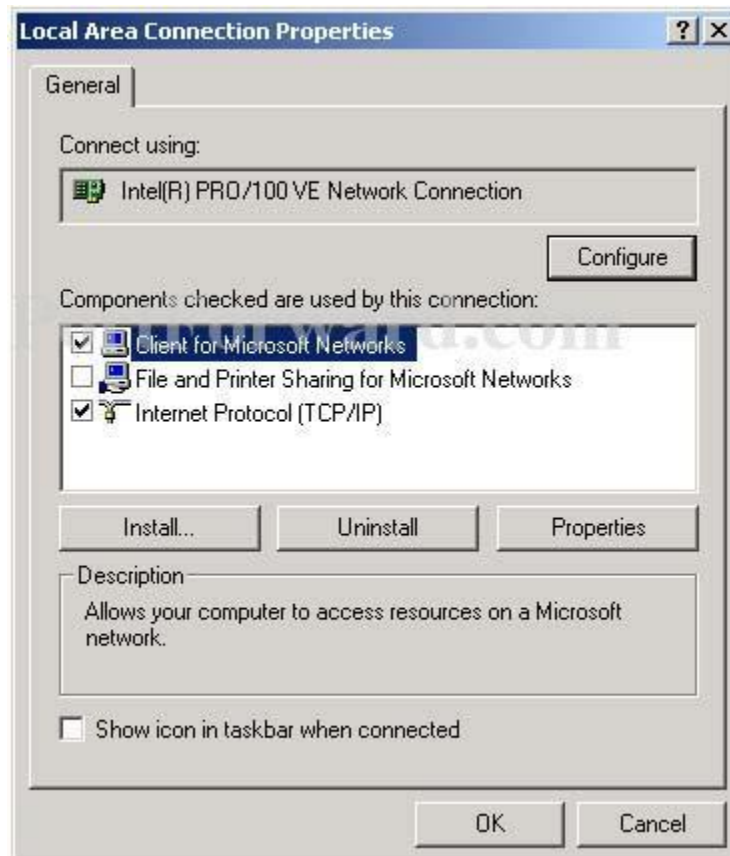
Step 2: Double click **Network and Dial-up Connections**.



Step 3: Right click on **Local Area Connection** then click **Properties**

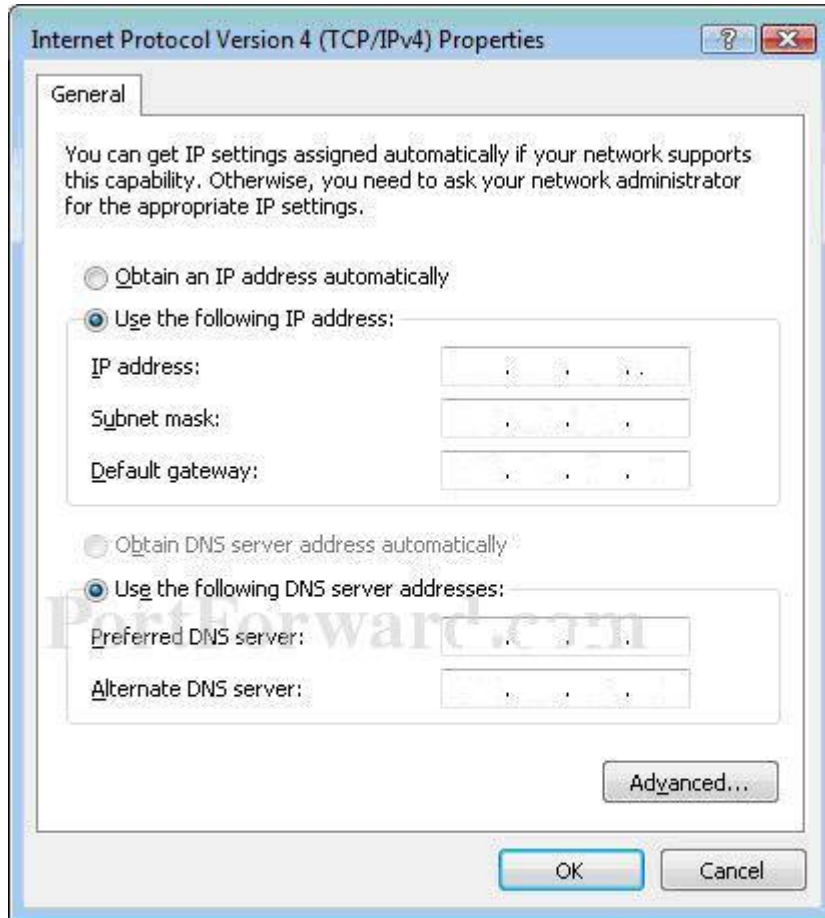


Step 4: Click **Internet Protocol(TCP/IP)** and then the **Properties** button.



Step 5: You will now see the following screen. Tick the round button next to 'Use the following IP address'. In the 'IP address' box enter the address provided to you when you checked in ( will be something like 10.10.1.150). Go ahead and enter 'Subnet mask' number in the appropriate box, then do the same for the 'Default gateway' box.

Towards the bottom of the window put a tick in the 'Use the following DNS server addresses' round button. Enter the DNS server number you have been provided (should look something like 10.10.1.1) into the Preferred DNS server box. Do the same for the Alternate DNS server box.



Step 6: Click **OK** to save your new settings, close all open windows by clicking **OK**. Try your new connection by opening your web browser. If you cannot connect to the internet go through the above instructions again before seeking assistance.